

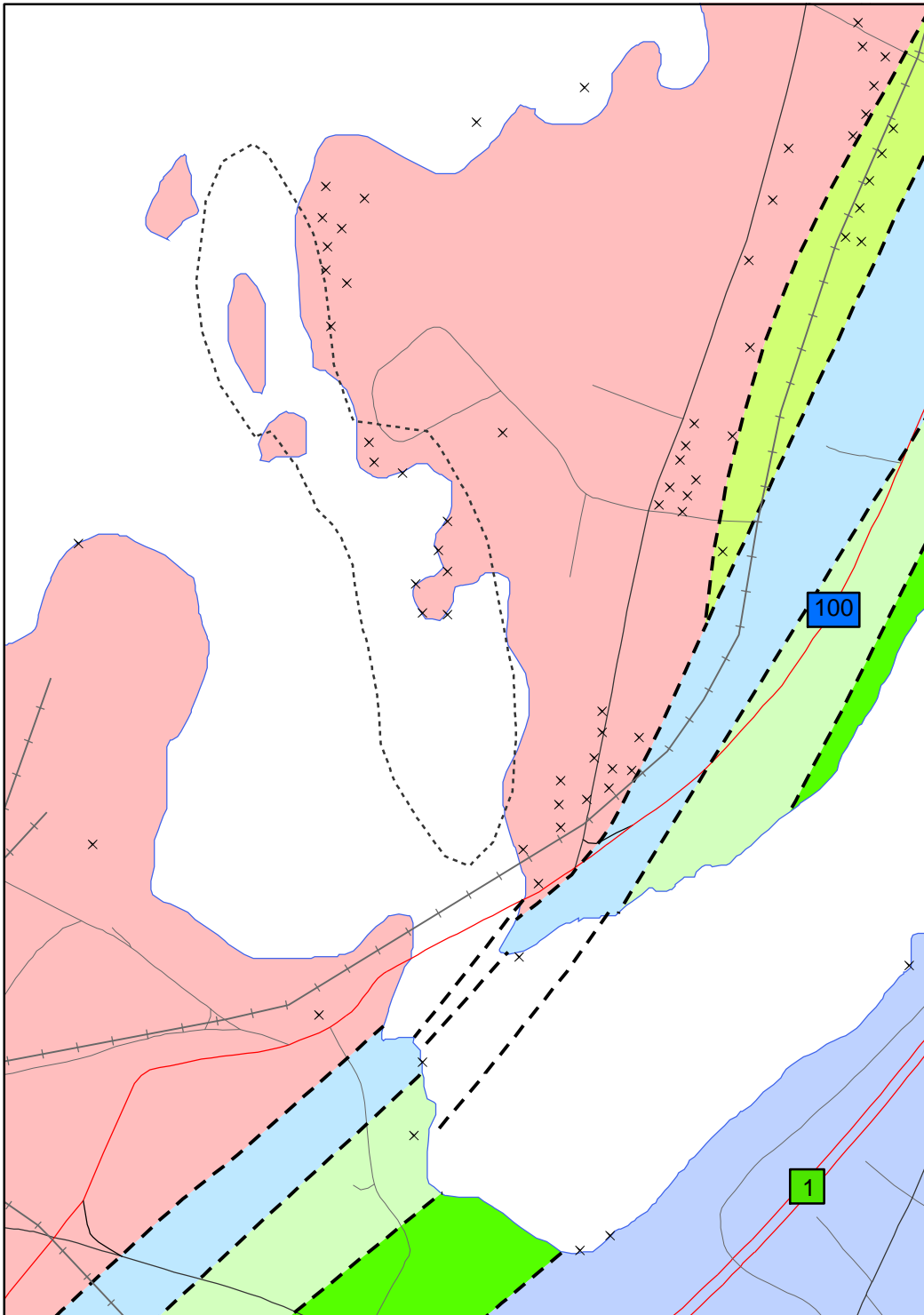
# Reversing Rapids

## Bedrock Geology Map

### Bedrock Geology

#### Formation (GNB Abbreviation) Age, Rock Type

- Ashburn Formation (ZASmb) Precambrian, Marble
- King Square Formation (CKQ) Cambrian, Sedimentary
- King Square Formation (CKQc) Cambrian, Sedimentary
- Reversing Falls Formation (CRFc) Cambrian, Sedimentary
- Saint John Group (COSJc) Cambrian-Ordovician, Sedimentary
- Silver Falls Formation (CSFc) Cambrian, Sedimentary
- × Outcrop Point
- Outcrop Area
- Faults
- Water



**STONE HAMMER**  
 GEOPARK GEOPARC

Author: Andrew Pollock      Date: July 2011      Scale: 1 : 7,626

Coordinate System:  
 NAD83 New Brunswick Stereographic Double Projection

Data Sources:  
 Roads - Government of Canada, Natural Resources Canada, Earth Sciences Sector; Bedrock Geology - New Brunswick Department of Natural Resources, Minerals

