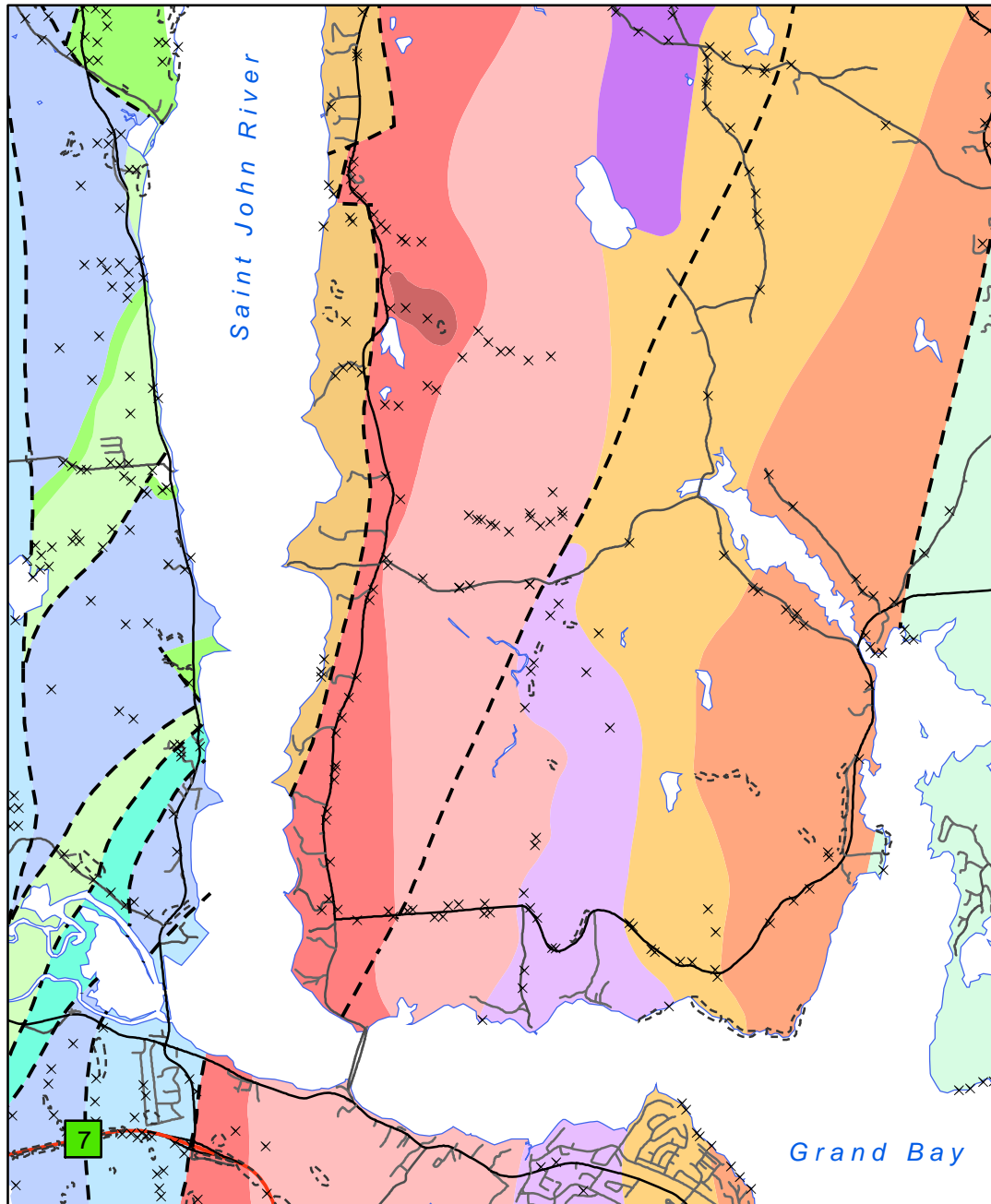




Brundage Point Bedrock Geology



Bedrock Geology

Formation (GNB Abbreviation) Age, Rock Type

- Bayswater Formation (SBfl) Silurian, Volcanic
- Beulah Camp Formation (ZBEft) Precambrian, Volcanic
- Browns Flat Formation (ZBBfc) Precambrian, Sedimentary
- Centreton Granite (SCTfi) Silurian, Intrusive
- Kennebecasis Formation (CKcc) Devonian, Sedimentary
- Lingley Granitoids (ZLli) Precambrian, Intrusive
- Lobster Brook Formation (ZLBft) Precambrian, Volcanic
- Long Reach Formation (SLRmv) Silurian, Volcanic
- Saint John Gr. (COSJc) Cambrian-Ordovician, Sedimentary
- Sand Point Granite (SSPfi) Silurian, Intrusive
- Waltons Lake Formation (SWLfx) Silurian, Volcanic
- Westfield Formation (SWft) Silurian, Volcanic
- Williams Lake Formation (SWIfv) Silurian, Volcanic
- Williams Lake Formation (SWlmv) Silurian, Volcanic

- x Outcrop Point
- Outcrop Area
- Faults
- Water



STONE HAMMER
GEOPARK GEOPARC

Author: Andrew Pollock Date: July 2011 Scale: 1 : 75,000

Coordinate System:
NAD83 New Brunswick Stereographic Double Projection

Data Sources:
Roads - Government of Canada, Natural Resources Canada, Earth Sciences Sector; Bedrock Geology - New Brunswick Department of Natural Resources, Minerals

